



Solutions for measuring and precision mechanics

- TOP QUALITY – swiss made
- HIGHEST LEVEL OF PRECISION
- FLEXIBILITY – project specific design

CHUCKS JF ultra-flat

Different sizes, jaws & special design



Aluminium,
anti-magnetic



Blank steel or anti-corrosive



CHUCKS ZF ultra-short and ZAS

Chuck sizes from Ø 30 mm, different jaws & special design



Blank steel or
anti-corrosive



Aluminium
(Oversize Ø
upon request)



Mini
Ø = 30 mm



Pin-jaw chuck,
aluminum, Ø = 80,
160, 240 mm

COLLET HOLDERS

Pneumatically / Automatable



NEW: ER16 + ER20
Ultra light < 1 kg
Rotatable



Manually



For standard collets (Rego-Fix, Schaublin, etc.)

DIVIDERS

With adaptation
W20 / P10



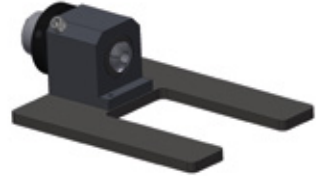
Direct and indirect division



Mounted on sine table

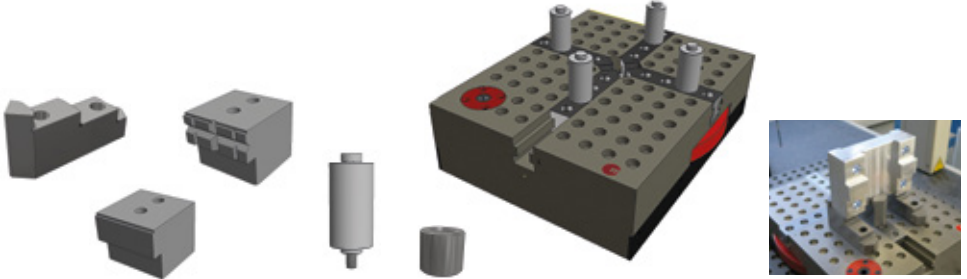


Universal clamping system



For optical measurement

TEST CLAMPING EQUIPMENT

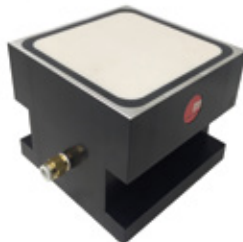


3D Flex Fix – The universal clamping system for the coordinate measuring machine (CMM):

- Unlimited clamping flexibility
- Very fast changeover times from one part to another



NEW: Clamp-Fix



Vacuum table for measuring
and test applications

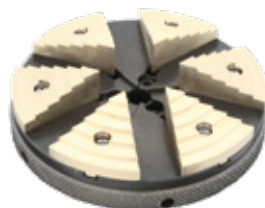


Contour Fix KF for measuring labs
(picture: mounted on Maprox grid board)



Visit us online and contact us to discuss your project:

+41 43 488 18 00 • www.maprox.ch



Maprox GmbH • 8620 Wetzikon
Switzerland • info@maprox.ch

 **maprox**
swiss made