

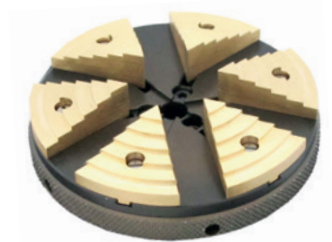


Clamping solutions for metrology and precision mechanics

- TOP QUALITY - swiss made
- HIGHEST MASS - precision
- FLEXIBILITY - project specific design

Chuck JF

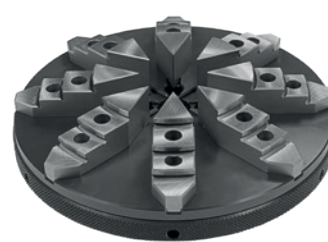
- Various sizes, jaws & special versions



Aluminium,
anti-magnetic



Bright steel or corrosion-protected



ZAS and ZAS-Key chucks

- Chuck sizes from Ø 30 mm, various jaws & special designs



Made of high-strength aluminium



With side drive



Aluminium pin chuck
Ø = 80, 160, 240 mm

Collet holder

- Pneumatic / Manual
- Inside-outside clamping; both pneumatic (can be automated) as well as manual



CT-Fix

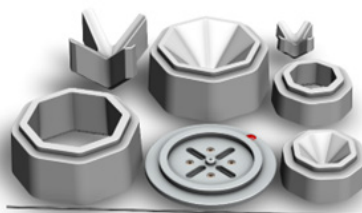
- Computer tomographic measurement



Dividers position
several small
measuring objects
in the funnel.



Intermediate rings
are stacked on the
funnel for longer
measuring objects.



UP-Chuck

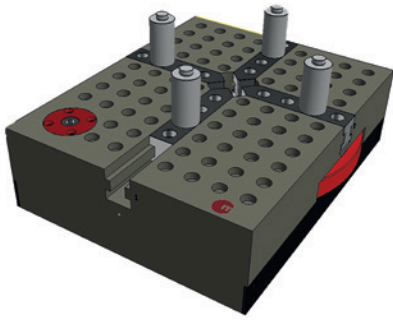
- Precision down to the smallest



Test clamping device

- 3D Flex Fix

Unlimited flexibility when clamping



- Kontur-Fix

Can be mounted on a multi-part frame

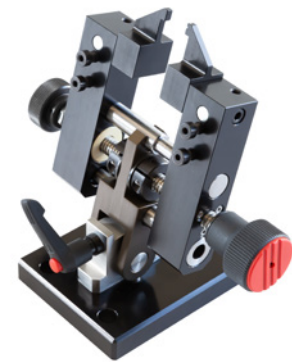
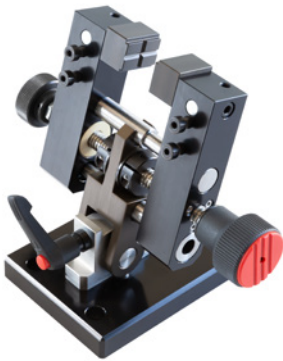


- Clamp-Fix

Unlimited flexibility when clamping

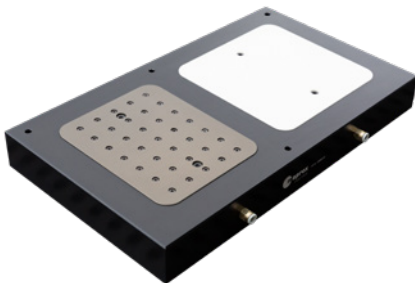
Grid plate jaws

Different jaws for each part



- Vacuum

Flexible in size and material



- Dual-Fix

with manual or pneumatic actuation possible



Automation

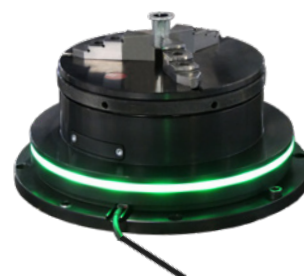
- Collet holder ER



- Maprox AIR



- E-Chuck



Direct integration on measuring machine



6 ZK 30

TRANSFORMING YOUR GOOD IDEAS INTO GREAT SOLUTIONS



Maprox AG
Usterstrasse 87
CH-8620 Wetzikon
Tel: +41 (0)43 488 18 00
Fax: +41 (0)43 488 18 08
info@maprox.ch • www.maprox.ch

 **maprox**
swiss made