

Your workpiece



Shaft / mount

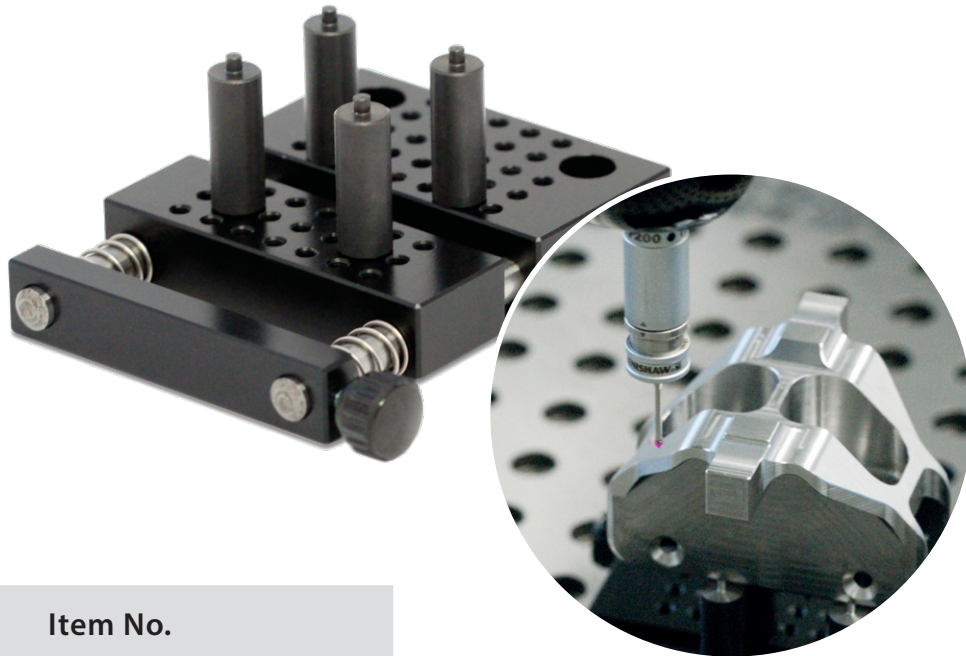
Forcing nut

Kontur-Fix | Dual-Fix

For universal use on measuring machines

- Fast and reliable clamping
- Good accessibility of the measuring probe
- Complete measurement in one clamping operation

• Kontur-Fix



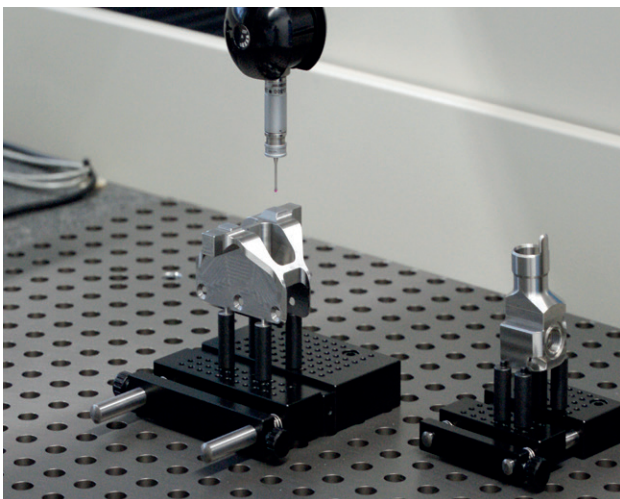
Type	Item No.
KF 50	KF050-000
KF 75	KF075-000
KF 110	KF110-000

Technical data

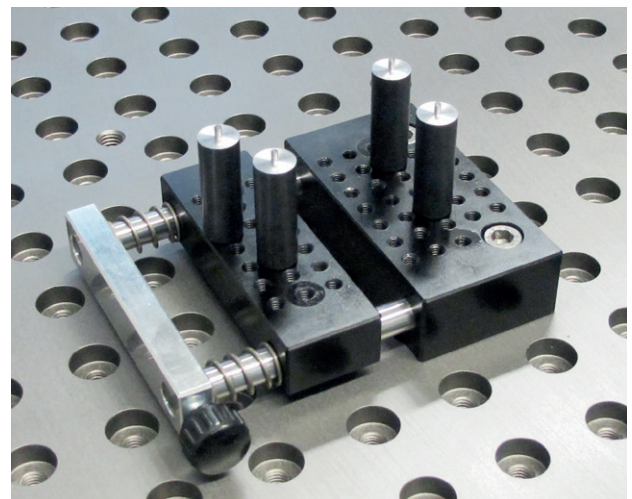
- Including 4 steel pin jaws, corrosion-protected (Reinox)
- For internal and external clamping
- Can be mounted on 25 mm grid plates
- Aluminium body, corrosion-protected, anodised

Clamping range

- KF 50 approx. Ø 18-30 mm x 40 mm
- KF 75 approx. Ø 25-45 mm x 70 mm
- KF 110 approx. Ø 50-75 mm x 120 mm

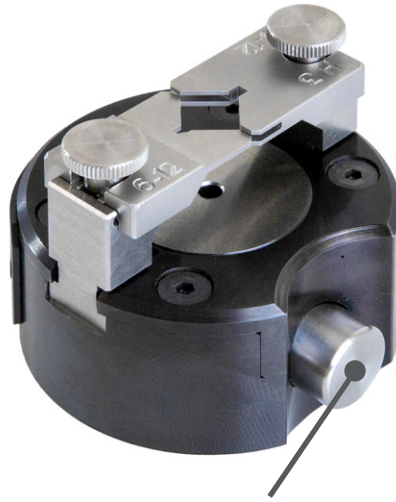


Thanks to good accessibility, the workpiece can be measured in a single clamping operation



KF 50 with special pin jaws

• Dual-Fix



Dual-Fix with manual actuation and pneumatic actuation possible

Type	Item No.	Remarks
External clamping, manual	QKAMND	not rotatable
External clamping, pneumatic	QKAPND	Rotatable (only with rotating union)
Internal clamping, manual	QKIMND	not rotatable
Internal clamping, pneumatic	QKIPND	Rotatable (only with rotating union)

Technical data

- Scope of delivery without jaws, jaws must be ordered separately
- Clamping ranges with standard jaws: inside: 2-27mm / outside: 0-30mm
- For internal and external clamping
- Can be mounted on MK1 and MK2 shank
- Corrosion-protected body
- Concentricity without centric stop 0.08 mm
- Clamping force: approx. 40 N

Options

- Jaws for all diameters possible
- Internal and external clamping
- Stops for component-specific positioning
- Pneumatic or manual actuation
- Rotary feedthrough for pneumatic actuation



Your workpiece



TRANSFORMING YOUR
GOOD IDEAS
INTO GREAT SOLUTIONS



Maprox AG
Usterstrasse 87
CH-8620 Wetzikon
Tel: +41 (0)43 488 18 00
Fax: +41 (0)43 488 18 08
info@maprox.ch • www.maprox.ch

